

BASE PRICING:

FDC - C22	\$150.00
FDC - R22	\$180.00



(1/32 DIN) FDC - C22
(DIN Rail) FDC - R22



Schedule A

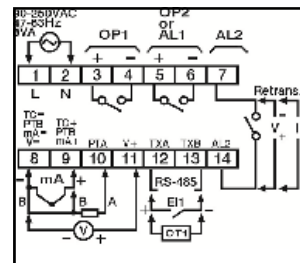
1. POWER INPUT

4: 90-264VAC 50/60 HZ	N/C
5: 11-40 VDC / 20-28 VAC, 47-63Hz	\$16.00

2. OUTPUT 1

1: Form A Relay*	N/C
2: SSR Drive 5VDC @30 mA	N/C
3: Isolated 4-20 mA/0-20 mA (OM98-3)	\$35.00
5: Isolated 0-10VDC (OM98-5)	\$35.00
C: SSR Drive 14VDC @40 mA (OM94-7)	\$30.00

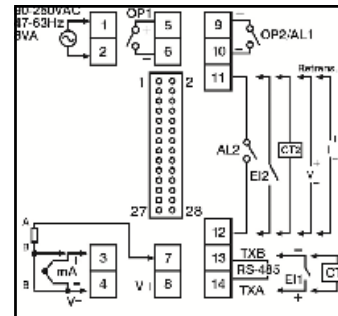
C22 Terminal Connection



3. OUTPUT 2 /ALARM 1

0: None	N/C
1: Form A Relay*	\$13.00
2: SSRD 5VDC @30 mA	\$13.00
3: Isolated 4-20/0-20 mA (OM98-3)	\$35.00
5: Isolated 0-10VDC (OM98-5)	\$35.00
C: SSR Drive 14VDC @ 40 mA (OM94-7)	\$30.00

R22 Terminal Connection



4. OPTION 1

0: None	N/C
1: RS-485 (Modbus)	\$60.00
2: 1 Event Input (EI1)	\$13.00
3: 1 CT Input (CT1)	\$13.00

5. OPTION 2

0: None	N/C
1: Retransmission 4-20mA/0-20mA (OM98-3)	\$60.00
2: Retransmission 0-10VDC (OM98-5)	\$60.00
3: Alarm 2 (Form A Relay)*	\$13.00
4: 1 Event Input (EI2 only for R22)	\$13.00
5: 1 CT Input (CT2 only for R22)	\$13.00

*Form A Relay 2A/240 VAC resistive

CT Sensor 50 amp (0-5vdc out)

CT94-1 \$38.00

DIN Rail Mount Adapter (C22 only) model DRA-32 refer to page 40

6. SPECIAL

00: None	N/C
----------	-----



File#: E197216



RoHS Compliant

P.O. Box 1196 · Bridgeview, IL 60455
888.751.5444 Sales · 888.307.8014 Fax

Technical Support: 866.342.5332
<http://www.futuredesigncontrols.com>